

# 2019 World Cup Series

World Cup Enoshima, Japan

Round Sailing Instructions (RSI)



RSI Enoshima 4 August 12:00 UTC



Japan 2018  
World Cup  
Series

# RSI 2 RULES

RSI 2.1 The Addendum Q, Umpire Fleet Racing can be found on <http://www.sailing.org/worldcup/onb.php>

RSI 2.2 The Addendum Q has been approved by World Sailing in accordance with rule 86.2 and Regulation 28.1.3. It applies to all medal races and all pre-race or post-race activities related to them.

# RSI 9 [DP] IDENTIFICATION AND ADVERTISING

Boats or competitors are required to display, carry or wear the following advertising and identification that will be provided by the OA and shall be fixed in accordance with the instructions posted on the Official Notice Board:

- a) Bow numbers;
- b) Event stickers;
- c) Colour dots for the event leaders (1<sup>st</sup>, 2<sup>nd</sup> and 3<sup>rd</sup>);
- d) Bibs for all competitors;
- e) Coloured bibs for event leaders (1<sup>st</sup>, 2<sup>nd</sup> and 3<sup>rd</sup>);
- f) Tracking system; and
- g) Onboard cameras.

# 10 [DP] [NP] SAFETY REGULATIONS

Emergency Communications:

Communication Channel	Number
Radio VHF	VHF Channel as per Addendum 1
Emergency Services	119
Organizing Authority Phone	+86 466-53-9799

# RSI 11 COMMUNICATIONS WITH COMPETITORS

RSI 11.1 When flag AP is displayed ashore, '1 minute' in RRS Race Signals AP is replaced with the time shown below:

Area	Time
Enoshima, Kamakura	30 minutes
Fujisawa, Zushi	60 minutes
Sagami, Hayama	75 minutes

## RSI 14 SCHEDULE AND COURSE ASSIGNMENTS

RSI 14.1 The opening ceremony will take place on Sunday 9 September at 18:00h in the Enoshima Aquarium (see Addendum 4). This changes NoR/SI 14.1

RSI 14.2 The first briefing for coaches and sailors will take place on Monday 10 September at 17:00 in the Home of Sailing tent.

There will be a daily morning meeting with team leaders & Coaches, starting on Wednesday 12 September at 09.00 in the Home of Sailing.

14.3 RSI Addendum 3 - Schedule of Races is published as separate document on the official notice board and on <http://www.sailing.org/worldcup/onb.php>

# RSI 15 COURSE AREAS AND MARKS

RSI 15.1 Course Areas are shown in RSI Addendum 1.

RSI 15.2 Marks 1, 2, 3, and 4, or associated gate marks, shall be inflatable marks and will be as follows:

Area	Marks 1, 2, 3, 4	New Mark	Finish Line Mark (when used)
Enoshima	Pink	Orange	Yellow cylinder
Kamakura	Green	Light blue	Yellow cylinder
Fujisawa	Yellow	Red	Yellow cylinder
Sagami	Orange	Green	Pink cylinder
Zushi	Light blue	Pink	Orange cylinder
Hayama	Rd	Yellow	Green cylinder

RSI 15.3 Offset marks will be orange cylinder.

RSI 15.4 Marks S1, S2, and S3 will be orange cylinder.

RSI 15.5 Inflatable start line mark, when used, will be orange cylinder.

RSI 15.6 Inflatable finish line mark, when used, will be orange cylinder.

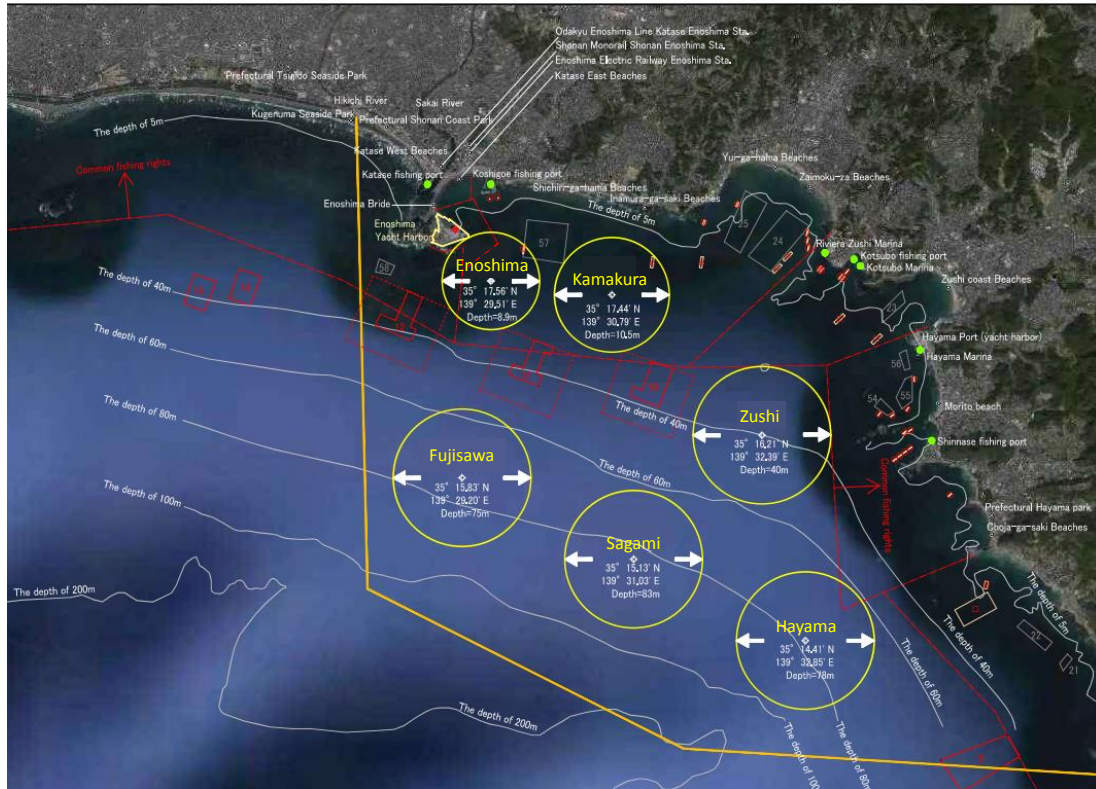
## RSI 20 INTERNATIONAL JURY

The protest time limit for each event is the number of minutes shown below after either a) the last boat has finished the last race of the day, or b) the display of "AP over A" or "N over A", whichever is the later

Area	Time
Enoshima, Kamakura	45 minutes
Fujisawa, Sagami, Zushi	60 minutes
Hayama	90 minutes



# RSI ADDENDUM 1 – CHART OF COURSE AREAS



Area	Area Centre	Area Diameter	VHF Channel	Area	Area Centre	Area Diameter	VHF Channel
Enoshima	35° 17.56' N 139° 29.51' E	1.0 nm	73	Fujisawa	35° 15.83' N 139° 29.20' E	1.4 nm	74
Kamakura	35° 17.44' N 139° 30.79' E	1.15 nm	72	Sagami	35° 15.13' N 139° 31.03' E	1.4 nm	69
Zushi	35° 16.21' N 139° 32.39' E	1.4 nm	71	Hayama	35° 14.41' N 139° 32.85' E	1.4 nm	73

# ADDENDUM 2 – VENUE MAP AND BOAT PARKS



# ADDENDUM 4 – OPENING CEREMONY

The venue of the opening ceremony will be as follows:

Enoshima Aquarium:

2-19-1 Katase Kaigan, Fujisawa-shi, Kanagawa Prefecture, 251-0035 Japan



World Sailing  
20 Eastbourne Terrace  
London W2 6LG  
United Kingdom

Tel: + 44 (0)2039 404 888

[www.sailing.org](http://www.sailing.org)

**sport / nature / technology**



**Japan 2018**  
World Cup  
Series